








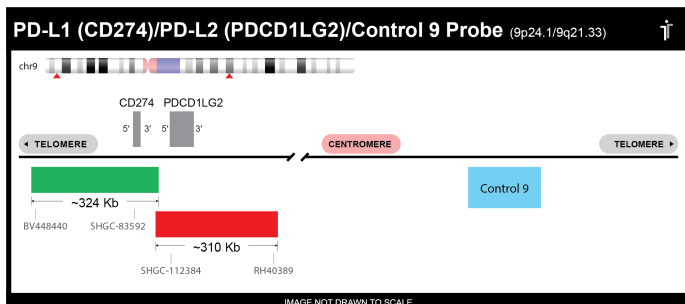
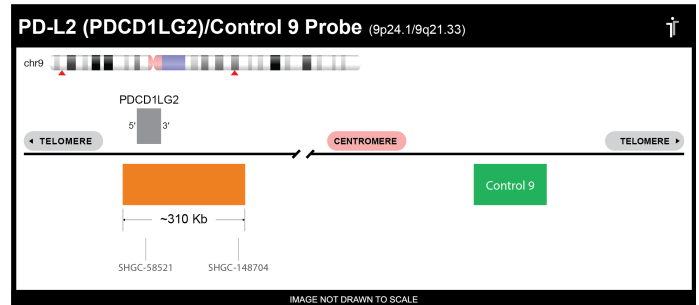
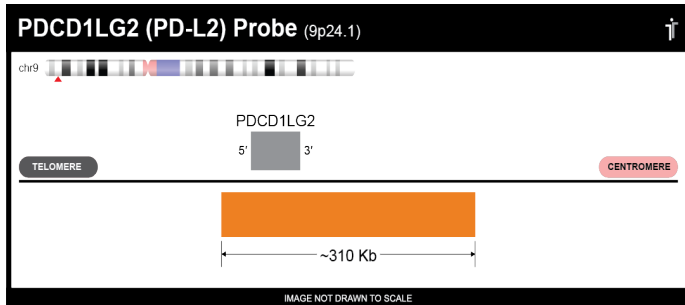
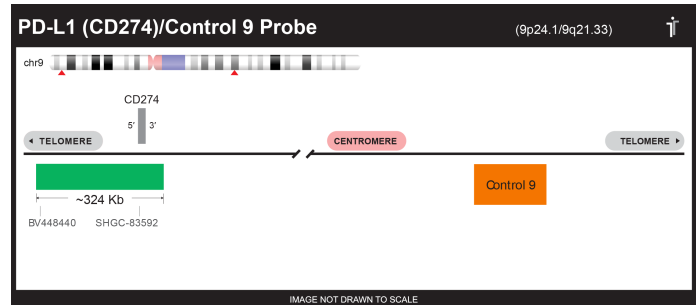
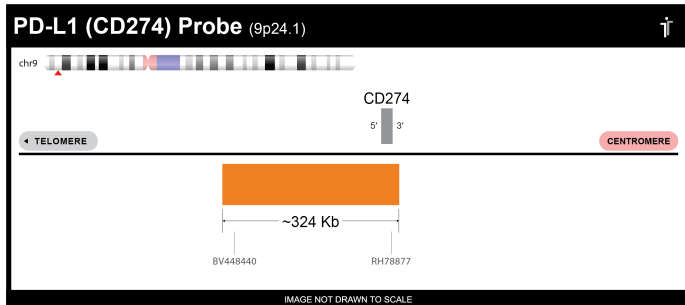



PD-L1 and PD-L2 can be amplified in a number of cancer types including non-small cell lung cancer, melanoma, gastric cancer, and Hodgkin Lymphoma. Our PD-L1 and PD-L2 FISH probes can detect these amplifications at the genomic level to help inform treatment. If these designs do not meet your needs, a custom PD-L1 panel can be designed for you in 7-14 days. This kit can not solely be used for making clinical decisions.

GENES	LOCATION / STS	DYE COLOR	SKU
PD-L1	9p24.1		PDL1-20-OR
PD-L1 & CHROMOSOME 9	9p24.1   9q21.33	 	PDL1-CON9-20-ORGR
PD-L2	9p24.1		PDL2-20-OR
PD-L2 & CHROMOSOME 9	9p24.1   9q21.33	 	PDL2-CON9-20-ORGR
PD-L1, PD-L2, CHROMOSOME 9	9p24.1   9q21.33	  	PDL1-PDL2-CON9-20-GRREAQ

**To Order The PDL Probe Kit**  
 visit [www.empiregenomics.com/PDL](http://www.empiregenomics.com/PDL)  
 or call our office at (716) 856-3873

For in vitro use only | CE marked in certain countries | RUO in US and other countries